

Compri-top

Description

Compri-top is the ideal sealing film for sealing moisture between the substructure / screed or wooden beams and the structure / wooden structure.

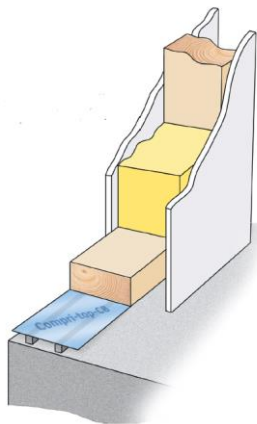
Due to its universal sealing properties, it is ideally suited as a vapor barrier film for sealing between screed (concrete, rough or smooth, damp surfaces, etc.) and moisture-sensitive structures (wood, wooden bars, wooden beams, etc.). It meets the high requirements as a vapor barrier according to the EN1931 standard.

Areas of Application

Compri-top is a specially-designed horizontal seal for timber-framed buildings. It prevents moisture migration from the supporting structure to the wall sole plate. With the addition of the impregnated foam strips, it also aids the airtightness and the thermal insulation between the two varying surfaces.

Dimensions

Rolls, roll length: 25 m
Thickness: 0.8 mm (plus impregnated tape, if added).
Width: 150, 200, 250, 300, mm or and/butyl
Additional dimensions available on request.



Important Information

All data are laboratory values, which may differ in practice and therefore they are no guarantees of a particular property. The variety of details and combinations may not be dealt with in this leaflet. The user is responsible to inform him accordingly. A specific work results cannot be guaranteed due to the unmanageability of the processing conditions. Own tests to ensure the desired results are expressly advised. Previous editions are no longer valid. Delivery is solely subject to our General Delivery and Payment Conditions. We reserve the right to alter the product subject to the technical progress or new developments.

Datasheet Compri-top V02

Benefits

- vertical moisture barrier (vapor barrier) and simultaneous horizontal seal.
- sealing of rough surfaces.
- saving a lot of time by assembling one band. instead of 3 different tapes (1 x membrane, 2 x Compriband).
- high tensile strength and very good tear resistance.
- very good fire resistance.
- ideal for connections between wooden beams.
- high density of driving rain on the Compriband.

Design

Compri-top 1: standard

Compri-top 2: with 2 impregnated foam strips (15x20 mm = width x height)

Compri-top 3: with 2 impregnated foam strips (15x20 mm = width x height) and 2 butyl-adhesive strips (20 mm)

Application

The substrate must be clean, solid, dry and free of solvents.

Run the Compri-top along the length of either the sole plate, or the foundation wall. Ensure it is flat, tension but do not stretch, and fix it to the substrate.

Compri-top 1 and 2: Fix with staples or flat head nails.

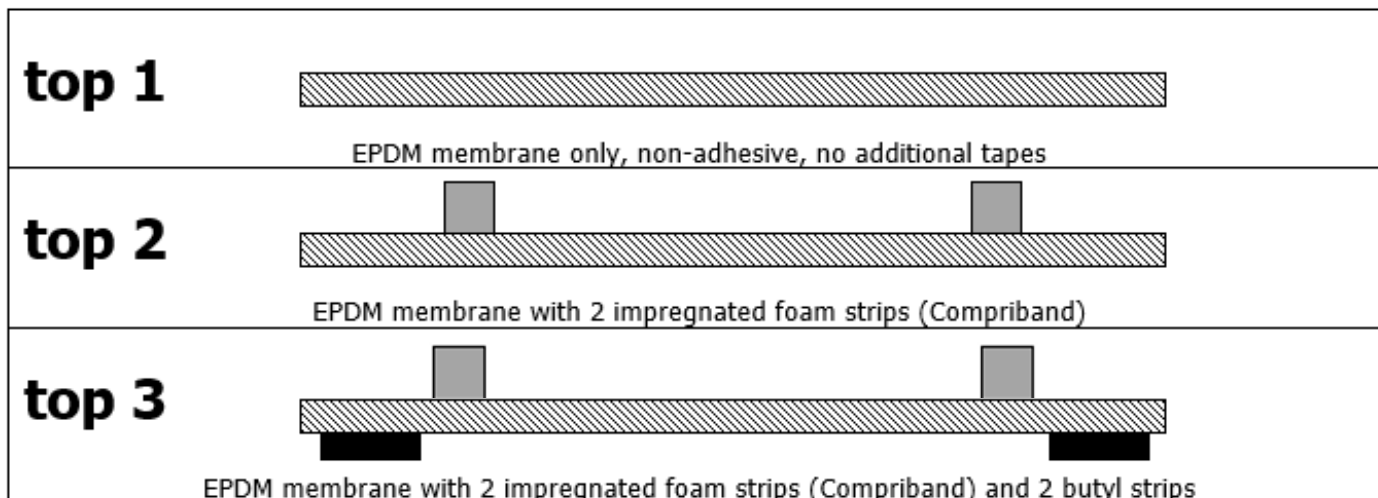
Compri-top 3: Fix with double-sided butyl-adhesive tape, apply the adhesive tape to the substrate and press carefully with a roller. The sealing strip must not be pulled too tightly.

If tapes are joined, allow an overlap of 20 cm. The tape must protrude by roughly 1-2 cm on both sides to prevent damp bridges occurring on either side of the wall. The overlaps can be bonded with Compri-top flex-adhesive XP.

Technical Data

Property	Test Method	Result
Material description		synthetic caoutchouc on EPDM basis
Colour		black
Water vapour diffusion resistance μ	DIN EN 1931	32,000
Elongation at break	DIN 53504	$\geq 300 \%$
Tensile strength	DIN 53504	$\geq 6.5 \text{ mPa}$
Building material class	DIN 13501 T1	E
Tear growth resistance	DIN 53504	$\geq 25 \text{ kN/m}$
UV light stability and ozone resistance	DIN 7864 T1	requirements fulfilled
Handling temperature		+5 °C to +35 °C
Temperature stability range		-30 °C to +100 °C
Dimension tolerance	DIN 7715 T5 P3	requirements fulfilled
Thermal conductivity of impregnated tapes	DIN 52612	$\lambda_{10, tr} \leq 0.042 \text{ W / m} \cdot \text{K}$
Shelf life and storage temperature		EPDM: unlimited impregnated foam and butyl: 1 year at +1 °C to +25 °C

Compri-top is available in following designs:



Important Information

All data are laboratory values, which may differ in practice and therefore they are no guarantees of a particular property. The variety of details and combinations may not be dealt with in this leaflet. The user is responsible to inform him accordingly. A specific work results cannot be guaranteed due to the unmanageability of the processing conditions. Own tests to ensure the desired results are expressly advised. Previous editions are no longer valid. Delivery is solely subject to our General Delivery and Payment Conditions. We reserve the right to alter the product subject to the technical progress or new developments.

Datasheet Compri-top V02

The Original. Quality since 1963.