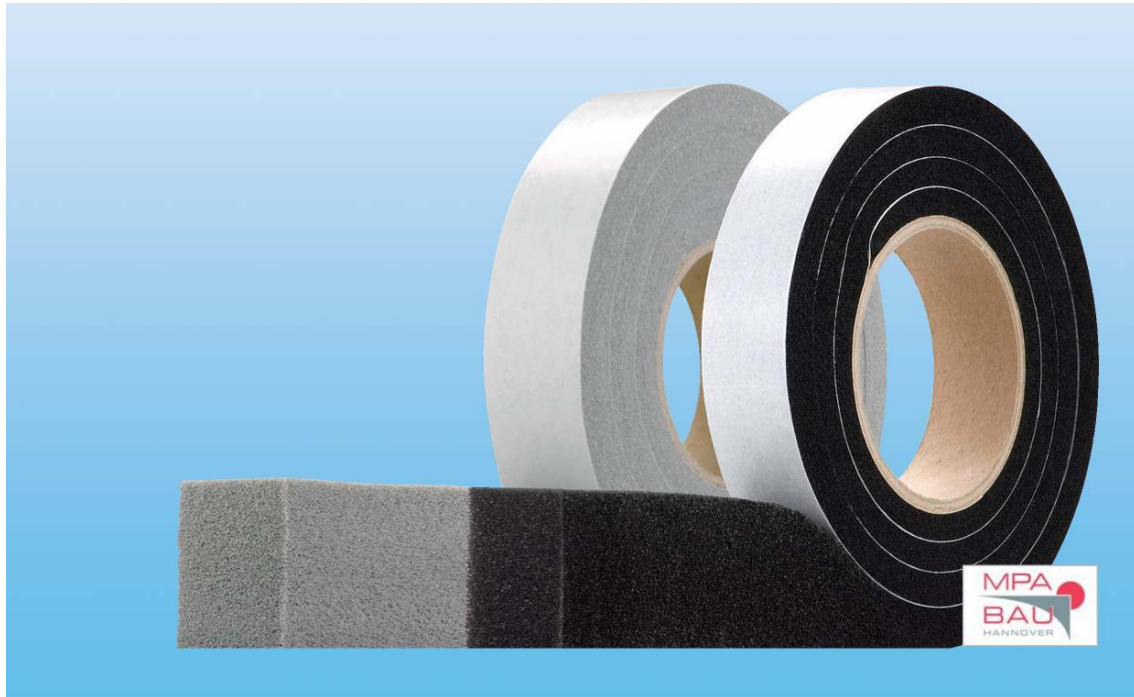


# Compriband-B300

**300 Pa: Extremely economic design!**  
**For external and internal sealing of joints and connections of the window.**



## Product Information

The Compriband-B300 is a joint sealing tape made of impregnated foam. It is used for outer and inner sealing of joints and connections in the window, and the entire building against rain up to 300 Pa.

## Areas of application

- Window, interior construction
- Facade (including natural stone)
- Timber-frame building, wood and metal construction
- Prefabricated construction, container construction, noise protection, roofing, etc.

## Colour

- black (gray on request).

## Delivery form

- precompressed to role.

## Product Benefits\*

- Fire behaviour according to DIN 4102-1 B2
- Open to vapour diffusion.
- Seals against rain, wind, dust and splash water.
- Heat and sound insulation.
- Paint coating compatible.
- Largely weather-independent processing.
- Controllable expansion behaviour at higher temperatures.
- To prevent contamination or unwanted expansion of the tapes, the rolls can be shrink-wrapped with foil.
- Adaption to unevenness in the joint and filling the cavities.
- Solvent-free, no hazardous material.

\* The properties are partly dependent on the degree of compression of the tape. Processing and installation instructions, see separate leaflet.

# Compriband-B300

**300 Pa: Extremely economic design!**  
**For external and internal sealing of joints and connections of the window.**

## Technical Data<sup>1</sup>

Basis of foam	Polyurethane cellular foam
Basis of impregnation	Acrylic resin with flame retardant

Characteristics/ Description of Material	Classification	Norm
Air tightness	In accordance with DIN 18542 BG2 > 300 Pa	DIN EN 1027
Temperature resistance	- 30° C bis + 90° C	DIN 18542 BG1
Compatibility with other materials	Meets the requirements	DIN 18542 BG1
Buildings material class / fire behaviour	B2	DIN 4102-1
Water vapour permeability, Sd-value	< 0,5 m	EN ISO 12572
Storing period	2 years at room temperature < 20° C, factory sealed	

<sup>1</sup> The correct functioning of the band can be achieved only under the condition if the tape is installed in accordance with our latest processing instructions, or has not applied and not been exposed to any unforeseeable influences for us. Decomposition caused by external effects is not covered by the warranty. Decisive for the acceptance of a possible warranty claim: The professional processing by said standards and compliance with the processing instructions. Standing water or permanent water wetting cannot be permanently compensated by the product and is not a reason for complaint/claim. All commitments are relating to the use of the product at the Central European climate conditions. Before mounting read the manufacturer's processing instructions. If the manual is not available, contact the manufacturer or reseller. The technical data are subject to change with the degree of compression.

Component movements and temperature-dependent changes in length are also to be added to the existing joint widths. Dimensional tolerance according to DIN 7715 P3.

The course of the joint edges is necessarily parallel. Measure joint widths and the band dimension according to the established joint tolerances and possible joint movements (if necessary, process various band dimensions). Please mind with the joint depths: mount the tape 2 mm back from the leading edge from the joint for security reasons. Kindly inform about details, if built in heavily loaded joints eg. park decks, sewage plants, bridges etc. in order to investigate the optimum solution.